

CARATTERISTICHE TECNICHE/TECHNICAL CHARACTERISTICS

MATERIALI/MATERIALS

- | | |
|---------------------------------------|---------------------------------|
| ⇒ acciaio al carbonio grezzo | ⇒ carbon steel untreated |
| ⇒ acciaio al carbonio zincato a caldo | ⇒ carbon steel hot-galvanized |
| ⇒ acciaio al carbonio ramato | ⇒ auburn carbon steel |
| ⇒ acciaio al carbonio Cor-Ten | ⇒ Cor-Ten carbon steel |
| ⇒ acciaio Inox in tutte le leghe | ⇒ Stainless steel in all alloys |

FINITURA/FINISHING

- | | |
|--------------------|-----------------|
| ⇒ grezza | ⇒ untreated |
| ⇒ zincata | ⇒ galvanized |
| ⇒ verniciata epoxi | ⇒ epoxi painted |
| a) max 200°C | a) max 200°C |
| b) max 300°C | b) max 300°C |
| c) max 400°C | c) max 400°C |

DIAMETRI/DIAMETERS

da/ from 50 a/ to 300 mm

LUNGHEZZA/LENGTH

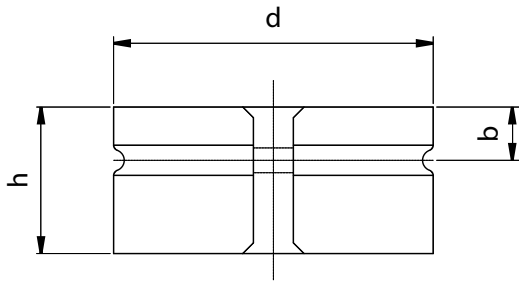
fino a 8 mt. a corpo unico
 o in più pezzi
 (per particolari giunzione vedere Tabella 7)

up to 8 mt. in 1 pieces
 or in more pieces
 (for junction details pls check Table 7)

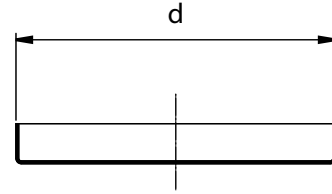
Tab. 2

COLLARI E FONDELLI / COLLARS AND BOTTOM PLATES

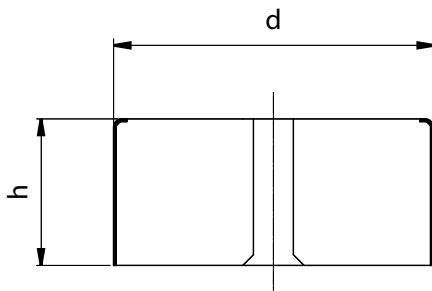
A



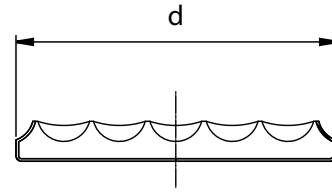
PIATTO / FLAT



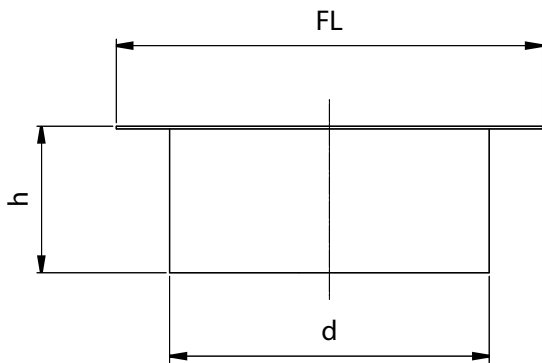
B



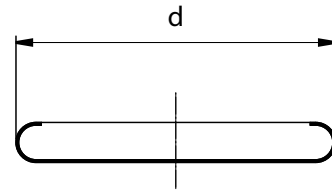
AGGRAFFATO / STAPLED



C



BOMBATO / ROUNDED



D

